



Growing **Stronger**,  
Growing **Together**,  
Growing **Philanthropy**



BROWN COUNTY  
**Community  
Foundation**

# From the CEO



Endowment gifts are essential in building a firm financial foundation for our nonprofit community while addressing the current needs of Brown County. The work we do is made possible because of the generosity of our donors and volunteers. We remain grateful for the important philanthropic role the community plays in creating meaningful and lasting impact in Brown County and relish the opportunity to share this good work with you in our Annual Report.

The calendar year ending December 31, 2021, did not mark the end of the COVID-19 pandemic which necessitated continuing important pandemic response activities like pop-up food pantries and nonprofit relief. Despite many challenges, we have continued addressing important community needs and continue building for the future. Most notably, we have diligently worked to raise awareness around important assets like affordable and accessible high quality early childhood education. Through our own grant writing efforts BCCF secured the funds to build a centrally located community preschool and daycare facility that will allow families to pursue educational and workforce opportunities while simultaneously expanding early childhood education career pathways through Brown County High School. It is a project that has been years in the making and just one example of the many development activities that will extend into the new year.

As financial stewards, 2021 was a year of remarkable growth for BCCF. We received \$695,729.65 in new gifts in 2021 and distributed a total of \$709,318 in grants to the community. In addition, our scholarship funds awarded more than \$47,776 to deserving students. The Foundation's endowment pool enjoyed a return of 19.2% in a very turbulent year for the financial markets. As you review this report, please know that we welcome your feedback on how we can enhance our role as your strategic partner in charitable giving and community building. We look forward to expanding on the progress made in 2021 to achieve an even larger impact in the years ahead. Maddison Miller, CEO

## Our Mission

*The Brown County Community Foundation provides community-wide collaborative leadership through philanthropy, mobilizing people and resources to make a positive impact.*



**Sean Hildreth**  
Marketing, Communications and  
Outreach Officer



**Jenise Bohbrink**  
Finance and  
Programs Manager

# Update from 2022 Board Chair Dwight Thompson

The Brown County Community Foundation serves the people in our county by mobilizing donors and community organizations in ways that positively impact the lives of us all. Since its formation in 1993, the foundation has been an underpinning supporter of projects that have transformed our community with cultural, recreational, and educational programs and facilities, in addition to helping organizations provide basic and essential life services.

This year's report highlights the good work carried out over the past 12 months. It was another year where the foundation not only responded to needs created by the ongoing pandemic, but also 1) launched ONE (Organizations for Nonprofit Excellence), a program that will provide training, educational resources, and networking for area nonprofits, 2) made significant progress on a childcare project that will fundamentally change the lives of families that live and work here, and 3) completed the requirements necessary to earn National Standards for U.S. Community Foundations reaccreditation.



The foundation is blessed with dedicated individuals that both serve on the board to provide leadership for the organization and serve on the committees that work with foundation staff to do the good and necessary work with fund raising, maintaining financial integrity, donor engagement, overseeing grant and scholarship awards, provide nonprofit education, oversee governance, and care of the foundation's facilities. It is a pleasure to work with them in service to our community.

I hope this report inspires you to join us in the foundation's work. I am excited about our community's future and in the role Brown County Community Foundation will have in making Brown County a better place to live, work, and visit.

## 2021 Board of Trustees

Phil McKown, Board Chair

Dwight Thompson, Vice Chair

Beverly Teach, Treasurer

Rachel Perry, Secretary

Victor Bongard III

Debbie Kelley

Jan Mills

Kerry Ridge

Kirstie Tiernan

Paige Freitag,  
Volunteer Legal Counsel



# 2021 Annual Report Event

The annual report meeting is an opportunity to celebrate our success alongside the community and recognize all the important people who make our nonprofit community work. As we adjusted to a new normal in 2021, we decided to be safe and stream the report again. We hope you were able to join us safely for our live stream. Working with Rainwater Studios again to celebrate the 2020 year, to honor volunteers, and to announce our newest grantees; we had an amazing event with local music performances, video testimonials, live announcements, and a great night of philanthropy in Brown County. We have to say a special thank you to the performers The Hammer and The Hatchet. We also want to thank our hosts, Kenan Rainwater and Mandy Rogier.

We continued to be flexible and adapt to the communities needs in 2021. It was another year with a variety of approaches to help out local nonprofits, community members, and students in a rapid and fiscally responsible manner. We took a thoughtful approach to our own resources to ensure we could be a beacon for our community during this time of concern. We pivoted and focused on creating a stronger community through collaboration. From the volunteers of the year to the Rudd Award, we were proud to share updates and honors with our community. We continued to provide a downloadable copy of our Annual Report to the Community to save on printing costs and ensure better access for the entire Brown County community.



# Events and Fundraisers

December 4th was a festive day in Nashville with Santa at the History Center, the Chamber's Holiday Light Parade, the inaugural Christkindl Market, and 300 children participating in our 7th Annual Stuff a Stocking event.



Participating sites included Brown County Public Library, Pioneer Women/Brown County History Center, Brown County Rock and Fossil Shop/Copperhead Creek Gem Mine, Changing Seasons, Carmel Corn Cottage, Big Woods Pizza, Hobnob Corner, The Wild Olive, JB Goods- Life is Good, B3 Gallery, Fallen Leaf Books, Tedro's Kettle Corn, The Clay Purl, Jack and Jill Nut Shop, Madeline's French Country Shop, The Toy Chest, Carol's Gifts, Lawrence Family Glass Blowers, Twisted Wick, Nashville Fudge Kitchen, Healing Hearts and Memory Making, The Educated Otter, Touch of Silver Gold and Old, Nashville Spice Company, McDonald's, and Brown County YMCA. We would also like to thank Hills O'Brown Vacation Rentals for sponsoring the Nashville Express train for the day.

Over \$6,000 was raised and income from the event will be placed into the Stuff A Stocking Unrestricted Endowment. Mark your calendars for this year - December 3, 2022!



The 24th Annual Howard Hughes Memorial Mushroom Sale was held on Memorial Day weekend at the Brown County IGA. In 2021, the sale generated over \$11,000 for 39 Brown County charities.

Howard Hughes passed in December 2011, but his spirit of giving has lived on in Brown County through donations from his estate and through several permanent endowments at BCCF. The sale is one facet of his lasting legacy of philanthropy.



In 2021, events were still limited so we tried some off the beaten path adventures in Brown County. Our Giving Picnics offered a variety of experiences to enjoy beautiful Brown County. Donors could choose a guided experience to see parts of Brown County loved by those who live here or take a picnic to a recommended location to explore on their own. This fun idea served as a placeholder until the return of our Giving Dinners in 2022. The picnics raised over \$1,000 in 2021.



## CHILDCARE IN BROWN COUNTY

In 2020, we surveyed parents across the county to better understand the state of early childhood education in our community. At that time, there were approximately 716 children aged 0-5 in the county with a program capacity to serve only 244. Parents who had children under the age of six were asked to identify their current method of child care, with most reporting that family, friends, or neighbors watch their children. Many parents lamented that they have had to take time off work when their family members are unavailable or that it's difficult to find someone they can trust. They feared their children were missing out on learning and social opportunities available in more structured child care environments.



No doubt, the impacts of COVID-19 have worsened the state of child care in Brown County. With school interruptions, quarantines, closures, unaffordable and inaccessible daycare, parents have few options for childcare. They are often faced with the impossible decision to choose between jobs where they are paid too little and childcare solutions that cost too much. Parents in Brown County pay an average of \$12,612 per year for infant care, comparable to the average in-state tuition at Indiana University.



In 2021, we received a grant from Regional Opportunities Initiative to fund the construction of a preschool and toddler daycare at the former Brown County Intermediate School site. That construction has completed and the new preschool room is fully furnished and ready to open in fall 2022. However, we still need the community's support with our annual fundraising goal of \$50,000 which supports 30 Pre-K scholarships for low income families across the school district.

Scan the QR code to donate to the PreK scholarship fund today.



# Reaccreditation

Brown County Community Foundation (BCCF) recently received accreditation with the nation's highest standard for philanthropic excellence. National Standards for U.S. Community Foundations®(National Standards) establish legal, ethical, effective practices for community foundations everywhere.

“Meeting the National Standards benchmarks is a rigorous, comprehensive process,” said Randy Royster, board member of the Council on Foundations. “This accreditation is a significant accomplishment that indicates BCCF demonstrates a commitment to transparency, quality, integrity and accountability as it carries out its mission.”

The National Standards for U.S. Community Foundations® program requires community foundations to document their policies for donor services, investments, grantmaking and administration. With over 500 community foundations already accredited nationwide, the program is designed to provide quality assurance to donors, as well as to their legal and financial advisors.

“This is critically important to our donors,” said Dwight Thompson, BCCF Board of Trustees Vice Chair. “When people make a charitable bequest or establish a fund, they are putting their trust in us. They are counting on us to manage the investment wisely, honor their charitable wishes and, in some cases, provide lifetime income to a loved one. The National Standards accreditation says our house is in order.”

Special thanks to the Governance Committee for their work on this endeavor.

Victor Bongard III (Chair), Linda Hobbs, Jan Mills, Rachel Perry, Beverly Teach, and Dwight Thompson



**Excellence. Accountability. Impact.™**



## Planned Giving In Brown County

Virtually any asset of value can be given to the Community Foundation. Regardless of the size of your estate, by contacting your attorney and creating or updating your will, you can provide for your beneficiaries while leaving a personal legacy to support a cause that has meaning to you.

### **Write Your Will**

Use will planning as an opportunity to decide what type of legacy gift best suits your estate planning goals.

### **Life Insurance**

Name the Foundation as the irrevocable owner and beneficiary of a policy.

### **Charitable Bequest**

You can bequest a certain dollar amount, a percentage, or certain property.

### **Trusts**

Trusts have become an increasingly important tool in estate planning, especially in the field of charitable giving. Individuals form different types of trusts to:

- Avoid probate administration
- Secure income, gift and estate tax savings
- Decrease gross estate size
- Assure preservation of wealth and to protect assets from creditors
- Diminish asset management responsibilities
- Control disposition of assets to beneficiaries

Contact us to request a brochure on any gift type and we will help to ensure your charitable intent.



# The Del Newkirk Society Planned Giving for Brown County



In 2001, BCCF Board of Trustees established the Del Newkirk Society. With great affection and appreciation, it was named in honor of one of our founders and former volunteer Executive Director, Del Newkirk.

The Del Newkirk Society has been established to recognize those who, like Del and his wife Letty, wish to remember the Brown County Community Foundation and ensure its mission continues in perpetuity.

All members of the society have included the Brown County Community Foundation in their planned gifts. To become a member, please contact [ceo@bccfin.org](mailto:ceo@bccfin.org) to setup a time to discuss your charitable intent.

## Newkirk Society Members

Bob Andrew  
Shirley Boardman  
Pat Blocker  
Jack\* and Patricia Bond  
Burton and Suzanne Borgelt  
Betty Crews\*  
David and Kathy Cuppy  
Carolyn Dutton  
Annella "Nel" Hamilton\*  
Howard F. Hughes\*  
Richard and Ruth Johnson\*  
Michael and Jaydene Laros  
William and Patricia Lloyd  
Elaine Mallory\*  
Phil McKown and Paul Walker  
Scott and Jan Mills  
Delano and Luzetta Newkirk  
Dewayne Newkirk\*  
James and Amy Oliver  
Robert and Donna Ormiston  
Genervra "Chig" and James Owens\*  
Charlotte Reeves\*  
Samuel and Joan Rosen\*  
Dawn Snider  
Beverly Teach  
Charles and Phyllis Truemper\*  
Robert\* and Anita Wright  
Anonymous (3)

\*deceased

# 2021 Community Grants

The Grants Committee received 22 applications in 2021 totaling in excess of \$180,000 in funding requests. These are not easy decisions to make, and we appreciate their conscientiousness.

Ultimately, the committee granted a total of \$92,484 to these organizations. This is a small sampling of the dollars we grant to the Brown County community, annually.

**Brown County Art Gallery**  
\$8,750 for LED gallery lights

**Brown County Habitat for Humanity**  
\$15,000 to create a long-range plan for future fund-raising strategies and builds

**Brown County Solid Waste Management District**  
\$3,887.21 for 6 new recycling bins

**Brown County YMCA**  
\$4,000 for pool improvements

**Brown County 4H Council**  
\$5,000 for 2021 4-H Camp Enrollment Subsidization

**God's Grace**  
\$10,000 for the On the Road Again back to school program

**Glory Girl Productions**  
\$5,000 for the Brown County Christkindl Artisan Market

**Human Services Inc., Head Start**  
\$5,052 for playground improvements



# 2021 Community Grants

## Indiana Heritage Arts, Inc.

\$1,695.57 for Pottery Equipment

## Jefferson Street Park

\$3,505 for Polly's Bark Park

## Live Adventurously

\$936.49 for a women's adventure weekend

## Living With Purpose Girls

## Outreach Ministry Inc.

\$2,960 for the women's hygiene pantry

## Lotus Blossoms

\$4,500 for an educational outreach program in Brown County schools

## Peaceful Valley Heritage

## Preservation Society

\$3,300 for Restoration of monuments and tombstones in Southview Cemetery

## Society of St Vincent DePaul

\$3,500 for their Back to School Program

## T.C. Steele State Historic Site

\$1,000 for Arts and Environment Programming at the site

## TRIAD

\$3,429.60 for project lifesaver

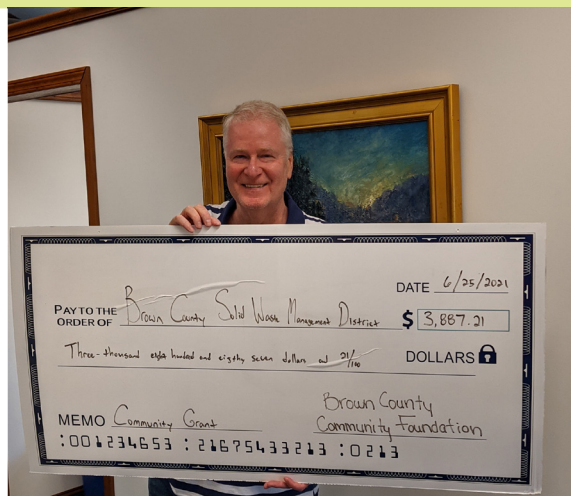
## Turning Point Domestic

## Violence Services

\$1,967.18 for learning activities for clients

## Women's Resource Center

\$9,000 for privacy and safety fencing





## Fabulous 50 Chooses 2021 Award Winners

Each of the over 100 members of the “Fabulous 50” women’s giving circle donates \$200 annually. Submitting a charity of their choice on a slip of paper, each member waits with anticipation to see if their choice is drawn as one of three to vie for the year’s donations.



**Brown County Early Education Center (EEC) at Brown County Schools**  
\$11,000

The high quality EEC will address both the current lack of childcare options in the county and the need for qualified, credentialed childcare providers in the region. This funding will be used for furnishings in the two-year-old toddler room.

**Brown County Habitat for Humanity**  
\$5,500

These funds will cover some of the extra cost of the current home building project and our “Brush with Kindness” program which assists low-income individuals and families by providing small structural repairs and access ramps for their homes.



For more information about the Fabulous 50 Women’s Giving Circle, please contact Founder Betsy Lease at [betsy.lease@icloud.com](mailto:betsy.lease@icloud.com).

## Congratulations to the 2021 Lilly Scholar!

Since 1998, Brown County Community Foundation has had the privilege of awarding Lilly Endowment Community Scholarships to 39 Brown County High School Graduates. This annual scholarship will pay a four-year tuition and \$900 a year for books and equipment to the Indiana public or private college of the student's choice.

The scholarships are the result of a statewide Lilly Endowment initiative to help Indiana students reach higher levels of education. Indiana ranks among the lowest states in the percentage of residents over the age of 25 with a bachelor's degree.

To date the Lilly Endowment Community Scholarship Program has awarded more than 5,000 full-tuition scholarships and over \$439M in scholarship tuition.

Our 2021 winner, **Emelia Koester**, received a full four year scholarship to Purdue University.



### 1998-2020 Brown County Lilly Endowment Community Scholars

|      |                       |                          |      |                    |                            |      |                   |                       |
|------|-----------------------|--------------------------|------|--------------------|----------------------------|------|-------------------|-----------------------|
| 1998 | Kyle "Weslie" Deckard | Rose-Hulman              | 2003 | Lauren Todd        | Indiana University         | 2009 | Margaret Burke    | Depauw University     |
| 1999 | Joel Bolinger         | Earlham College          | 2004 | Jeremy Burton      | Wabash College             | 2010 | Michael Dobson    | Indiana University    |
| 1999 | Sarah Merryman        | Purdue University        | 2004 | Joseph Schmidt     | Ball State University      | 2010 | Jeremy Wetzel     | Wabash College        |
| 2000 | Stephan Chamblee      | Indiana State University | 2004 | Sarah Warburton    | Butler University          | 2011 | Bailey Harmon     | Indiana University    |
| 2000 | Robert Drake          | Rose-Hulman              | 2005 | David Phelps       | Rose-Hulman                | 2012 | Alice Merryman    | Purdue University     |
| 2001 | Jessica Arnett        | Indiana University       | 2005 | Matthew Spiller    | Franklin College           | 2013 | Connor Guingrich  | Purdue University     |
| 2001 | Brandon Kirkham       | University of Evansville | 2006 | Joe Drake          | Indiana University         | 2014 | Isaac Gluesenkamp | Butler University     |
| 2001 | Emily Merryman        | Earlham College          | 2006 | Nicholas Zellmer   | Butler University          | 2015 | Sarah Kurdziel    | Purdue University     |
| 2002 | Christopher Bartels   | Butler University        | 2007 | Caitlin Sweeney    | Depauw University          | 2016 | Kayla Snyder      | Ball State University |
| 2002 | Sara Hedrick          | Depauw University        | 2007 | Kyle Snyder        | Butler University          | 2017 | Elizabeth Huls    | Ball State University |
| 2002 | Aravon McCalla        | Indiana University       | 2008 | Brittney Wagler    | Manchester University      | 2018 | Grace Jackson     | Butler University     |
| 2003 | Abigail Adams         | Butler University        | 2008 | Courtney VanWinkle | Indiana University         | 2019 | Chase Watson      | Rose-Hulman           |
| 2003 | Terran Marks          | Purdue University        | 2009 | Jessica Harding    | University of Indianapolis | 2020 | Chloe Robison     | Purdue University     |

# 2021 Scholarship Recipients

**Alan and Sandee Hazelbaker Family  
Habitat**

John Wietlisbach

**Betty Moebs Memorial**

Emma Beck

**Bill and Judy Zimmerman**

John Oliver

**Bill Monroe Memorial**

Emma Beck

**Bob and Wilma Hale Family Nursing**

Kathrine Redding

**Brown County Citizen's**

Morgan Wilson

Calla Imming

Isa Fogg

**Brown County Indiana University**

Megan Bickley

**Bruce Gregory Temple Memorial**

John Oliver

**Burke/Tharp Legacy**

Natalie Suding

**Claude L. Graham Family**

Myka Snyder

**Dorothy Stewart Memorial**

Calla Imming

**Dr. Brester**

Abigail Angebrandt

**Faye Lynn Deckard**

Abigail Oaldon

**James A. Volland**

Travis Ely

Megan Bickley

Wylah Brahaum

Natalie Suding

John Oliver

Abigail Angebrandt

Lauren Akles

Noah Cochran

Isa Fogg

Lillian Giles

John Wietlisbach

**John A. and Cheryl J. Eyed**

Meg Smith

**Larry C. Banks Bronze Star Memorial**

Travis Ely

**Milloy Family**

Caleb Doss

**Norman Family**

Layna Ballard

**Peaceful Valley Memorial**

Cameron Fox

**Sam and Harriet Johnson-Purdue**

Noah Cochran

**Simon Family**

Abigail Angebrandt

**Steve and Cathy Junken**

Morgan Wilson

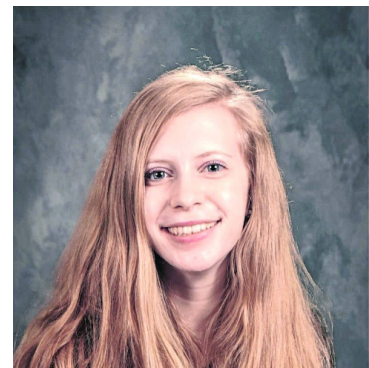
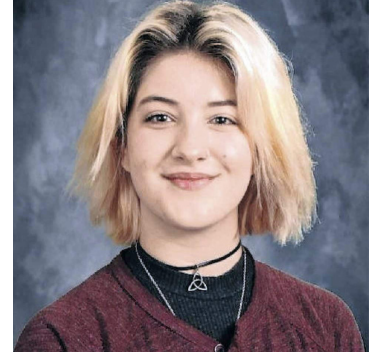
# Scholarship Funds

Education has been a primary focus of the Foundation's efforts since its founding in 1993. In fact, the first endowment fund established was the Larry C. Banks Bronze Star Memorial Scholarship.

The Foundation manages several academic scholarship funds, many established expressly for Brown County High School graduates. However, others, like the Banks Scholarship, focus on vocational education and/or non-traditional students.

We are proud to report that the Community Foundation administered 31 scholarship funds to very impressive and deserving students in Brown County. We awarded over \$47,000 in scholarships in addition to the Lilly Endowment Community Scholarship.

Through the Foundation's affiliation with The Lilly Endowment Inc., thirty-nine Brown County residents have received four-year full-tuition scholarships through the Endowment's Community Scholars Program. To view a full list of scholarship funds, please visit page 28.



# Brown County Thrives Because of Volunteers

Our nonprofit partners are invited to submit compelling stories about their most dedicated volunteers. The BCCF Advancement Committee reviews these applications and selects the Volunteer of the Year. This volunteer is recognized during our Annual Report to the Community. The winner selects a nonprofit to receive a \$500 grant from the BCCF. The community is the true winner, benefiting from the time and talent of all of our generous community volunteers.

## 2021 Volunteers of the Year



### Warren and Barb Schade\* Jonathon and Rosey Bolte and Shirley Boardman

\*not pictured

This team has been an integral part of the success and incorporation of food distributions that began April of 2020 and continue today. Without these amazing volunteers the households that were served with this important outreach would not have been served.

They are a closely intertwined force and the amount of hours devoted to Brown County by these folks is truly honorable.

Warren and Barb Schade, Jonathon and Rosey Bolte, and Shirley Boardman are true servants to the Brown County Community. Thank you for all that you do to keep Brown County residents secure with food.

## Thank you to our 2021 volunteer committee members!

### Advancement

Kirstie Tiernan, Chair  
Sarah Butler  
Katie Finney  
Sarah Laros  
Samantha Smith  
Kim Spencer  
Andi Wilson

### Finance

Beverly Teach, Chair  
Debbie Kelley  
Phil McKown  
Jan Mills  
Laurie Teal

### Grants

Kerry Ridge, Chair  
Peg Lindenlaub  
David Phelps  
Erica Rudd  
Rod Russell  
Dwight Thompson

### Governance

Dwight Thompson, Chair  
Victor Bongard III  
Linda Hobbs  
Jan Mills  
Rachel Perry  
Beverly Teach

### ONE

Debbie Kelley, Chair  
Betsy Lease  
Phil McKown  
Jan Mills  
Donna Ormiston  
Rachel Perry

### Scholarship

Phil McKown, Chair  
Rhett Fagg  
Elizabeth Mills  
Arthur Omberg  
Kathleen Stephens  
Ann Walters  
Andi Wilson



# Kim Robinson Named 2021 John D. Rudd Award Winner



Since 2005, Kim Robinson has been the Director and CEO of the Brown County YMCA. Her knowledge of the community and her willingness to take on other challenges goes well beyond the requirements of her position.

She has been the face and backbone of food distributions during the pandemic. She helped write a grant to the Community Foundation's Rapid Response Fund for a walk-in cooler/freezer at St. Vincent de Paul, worked with Shirley Boardman to secure a refrigerated truck to handle

the pallets of food that were available but needed to be picked up, and has kept the records of each pantry event and the more than 100 tons of food distributed.

Whatever the project or need, Kim's involvement and reputation are core ingredients. People trust her, know her, and rely on her authentic and sincere intent. Kim Robinson's qualifications for the Rudd Award were summed up by Shirley Boardman in the following comment:

"Kim is resilient, has the heart of Brown County in everything she does, inspires others to be leaders, knows how to involve others and how to evolve a project, and remain positive. Her personality wears well no matter the situation. Her ego never overshadows her heart and authentic concern. She is willing to do the smallest of tasks and the big ones. Sacrificing herself, her personal time, her own need for food and water, even her family time is never an issue. She is so deep in my heart and in my gratitude. What a gift she is to Brown County!"



## PAST RECIPIENTS OF THIS AWARD

- 2003 John D. Rudd
- 2004 Yvonne Olinger
- 2004 David Martin
- 2005 Nina Jo McDonald
- 2006 Ray Laffin
- 2007 Robert Kirlin
- 2008 Betsy Voss-Lease
- 2009 John V. Davis
- 2010 Jaydene Laros
- 2011 Andy Rogers
- 2012 Howard F. Hughes
- 2013 Donna Ormiston
- 2014 Tom Tuley
- 2015 Jeffrey A. Boley
- 2016 Linda Welty
- 2017 Rita Simon
- 2018 Ruth Reichmann
- 2019 Judith Stewart
- 2020 Graham "Teed" Howard

# 2021

## Financial Report

Total Gifts Received

**\$916,774**

Total Scholarships Awarded

**\$46,877**

excludes Lilly Endowment

Year End Net Assets

**\$16,238,850**

Total Grants Given

**\$782,892**

### Statement Of Activities as of December 31

#### Support & Revenues

|   |                    |
|---|--------------------|
| Contributions.....                              | \$841,160          |
| Grants.....                                     | 58,483             |
| Fundraising, events, other.....                 | 12,158             |
| Investment return, net.....                     | 2,475,723          |
| Administrative fee income.....                  | 222,829            |
| Change in value of life insurance.....          | 961                |
| Change in value of split interest agreements... | 14,936             |
| Net assets released from restrictions.....      | -0-                |
| <b>Total Revenues</b>                           | <b>\$3,626,250</b> |

#### Expenses

|                                |                    |
|--------------------------------|--------------------|
| Program services.....          | \$1,014,732        |
| Management & general.....      | 141,511            |
| Fundraising & development..... | 43,018             |
| <b>Total Expenses</b>          | <b>\$1,199,261</b> |

### Statement Of Financial Position as of December 31

#### Net Assets

|                               |                     |
|-------------------------------|---------------------|
| Unrestricted                  |                     |
| Operating.....                | \$776,194           |
| Administrative Endowment..... | 55,835              |
| Board Deignated Reserve.....  | 114,674             |
| Restricted                    |                     |
| For specific purposes.....    | \$2,636,184         |
| Due to time restrictions..... | 304,549             |
| In perpetuity.....            | 12,351,414          |
| Underwater endowments.....    | -0-                 |
| <b>Total Net Assets</b>       | <b>\$16,238,850</b> |

Full Financials and Form 990 Available on [BrownCountyGives.org](http://BrownCountyGives.org)

# Growing Stronger, Growing Together, Growing Philanthropy

The Brown County Community Foundation offers a variety of easy ways for you to provide continued support for organizations and causes you feel the most passionate about, both in real time and long after you are gone.

How does it work? Your donation is invested within our multi-million dollar endowment pool and the earnings on your fund (dividends and interest) are distributed annually as grants and/or scholarships. By not spending down the principal investment, we ensure your donation continues to grow and serve Brown County, forever. BCCF will work with you to develop your legacy and ensure your wishes are fulfilled in perpetuity.

## Field of Interest Funds

create a resource in perpetuity to support the causes you care about, such as the arts, education, health and human services, or the environment.

Reach out to Maddison Miller at 812-988-4882 or [ceo@bccfn.org](mailto:ceo@bccfn.org) to learn how these funds can help you meet your charitable goals.

## Designated Funds

allow you to create permanent income for an organization of your choice in Brown County, or elsewhere, and ensure your support can grow and live on after your lifetime.

## Scholarship Funds

can be designed for students, at any stage of life, who are planning to attend a variety of school types, including traditional colleges and universities as well as vocational/trade/technical schools.

## Donor Advised Funds

are designed exclusively to invest, grow, and donate annually to charities and causes at your discretion.

## Unrestricted Endowments

support our annual grant cycle and enable the community foundation to support long-term solutions; respond quickly to emergencies; and meet changing social, cultural, educational, or environmental needs in our local community.

## 2021 Donors

Sherri D. Agnew  
Ms. Joan Amati  
AmazonSmile Foundation  
Gary and Kathy Anderson  
ATandT  
Auditor of the State  
August Fund  
Mr. and Mrs. John Aumage  
Austin Insurance Agency,  
Inc.  
Jon Bachmeyer  
Mrs. Brenda J. Badger  
Matthew and Jan Baer  
Kimberly Baird  
Tim and Leann Bales  
Mr. and Mrs. Gary Bartels  
Sarah Beck  
Mr. and Mrs. Ross C.  
Berryhill  
Mrs. Gloria Berryman  
Bezos Family Foundation  
Ken and Carol Birkemeier  
Kyle Birkemeier  
Ms. Laura Blackthorn  
Shirley Boardman  
Doreen Bochmann  
Brent and Jenise Bohbrink  
Rhea Ellen Boley  
Spring Bolin  
Victor Bongard  
Lisa Bowman  
Ms. Barbara Bowman  
Roger Brinkman  
Mr. and Mrs. James  
Brunnemer  
James and Diana Buhl  
Rod and Karen Caldwell  
James and Ann Callahan  
Ms. B. Diane Cantrell  
Mr. and Mrs. Jay D. Carter

Jeff and Connie Casey  
Mr. and Mrs. John R.  
Chambers  
Rev. Barbara Child  
Jennifer Cissell  
Derek and Sara Clifford  
Ms. Bonnie L. Closey  
Mrs. Susan Cody  
Mr. and Mrs. Rick Colglazier  
Bill Corcoran and Dan  
Withered  
Adam Crowe  
The Cummins Foundation  
Christopher Curtis  
Melissa J. Davis  
Tim Davis  
Dr. and Mrs. Michael Day  
Richard L. and Stephanie  
Dean  
William Dixon  
Jane Donaldson  
Fred R. Dornheim  
Richard and Bethany Drew  
Gene Elias and Shari Frank  
Linda Ellis  
Ms. Jane Ellis  
Carolyn and David Emmert  
L. Rhett and Marilyn M.  
Fagg  
Brian Faulkner  
Darla Fenneman  
Richard Flecker and Jeanne  
Lager  
Deborah Flesch  
Mrs. Fenella Flinn  
Marianne Fox Metzelaar  
Elizabeth Freitag  
Mrs. Tamra M. Galm  
Gamma Phi Beta  
Bloomington

Rodney and Heida Garrett  
and Family  
Susan Goelzer  
David and Bonnye Good  
Douglas and Toni Gray  
Francis E. and Brenda S.  
Green  
Ms. Janis Foster Greenlee  
Mr. and Mrs. Richard A.  
Greeno  
Dianne Marie Wise Gubka  
Richard and Karyn  
Gundrum  
Nora Gushwa  
Steve and Debbie Hackman  
Richard M. and Lisa M. Hall  
Mrs. Annella Hamilton  
Mr. Anthony D. and Dr.  
Laura Hammack  
Judy Hanson  
Mr. Kenneth R. Harker, Jr.  
Georgia S. Harris  
James Hasler  
Annie Hawk  
Paul and Sheryl Hickman  
Sean Hildreth  
Mr. M. Leo and Linda  
Hobbs  
Jayme Hood  
Graham and Mary Howard  
Mrs. Jane A. Huffman  
Independent Colleges of  
Indiana  
Indianapolis Periodontics  
PC  
J.B. Goods Inc.  
Johnson County  
Community Foundation, Inc  
Lois Jones Currie  
Bruce Jones

Laurie and Wayne Justice  
Davie Kean  
Mr. and Mrs. Richard D. Kelley  
Tim and Debbie Kelley  
Robert and Christy Kirlin  
Sharon Kitchens  
Dan Kraft and Marci Royalty  
Ms. Janet Kramer  
Kroger  
Susan Lamborn  
Kady Lane  
Michael and Jaydene Laros  
Karen Lawrence  
League of Women Voters of  
Brown County  
Betsy Lease  
Barbara and Gary Lewis  
Lilly Endowment Inc.  
Mark and Peg Lindenlaub  
Maggie Linscott  
Mr. and Mrs. William Lloyd  
Bev Logterman  
Lorenz Family Charitable Trust  
Jean and Mark Louis  
John S. and Shelley R.  
Macdonald  
Martha C Kaiser Stevenson  
Estate  
Mr. and Mrs. David Martin  
Cori McCabe  
Kevin McCracken  
Archie and Mary McDowell  
Philip McKown  
Ms. Vivian G. McNulty  
Duane and Vonda Mercer  
Mr. and Mrs. Sean Milloy  
Scott and Jan Mills  
Joe Misiniec  
Beth Mitchell  
Jenny Morrison

# 2021 Donors

Ms. Christina Myers  
Nashville Spice Company  
National Financial Services  
LLC  
Cindy Nelson  
Network for Good  
Mr. and Mrs. Del Newkirk  
Eugene and Donna  
Niednagel  
Danielle and Kate Nolan  
Terry and Janet Norman  
Renee L. Ogle  
Mr. Wayne O'Hara  
Gary and Sheila Oliver  
Ms. Amy Oliver  
Donna Ormiston  
Ms. Kimberly Paarlberg  
Todd and Leann Paarlberg  
Mrs. Carole E. Page  
Michael Parish  
Ms. Delores A. Percifield  
Ms. Mary Perez  
Ms. Rachel B. Perry  
Breezy Peyton  
Constance Pockevich  
Steven and Jane Pratt  
Premier Companies  
Brian Prevost  
Kenan Rainwater  
Collie A. Rees  
Denise Resnik  
Mr. Jean-Patrick Rich  
Mrs. Kathryn Richardson  
Murlaina Richardson  
Kerry and Susan Ridge  
John Roark  
Bill and Kim Robinson  
Jim Ross  
Rotary Club of Brown  
County

Mrs. Carol J. Routh  
Richard and Carol Routh  
Ms. Joanne Rozzi  
Scott and Erika Rudd  
Danielle Sadtler  
Mr. and Mrs. David W.  
Savage  
Warren and Barbara  
Schade  
Nancy Schmutzler  
Carol Schnyder  
Mr. and Mrs. James M.  
Schultz  
David Seastrom  
Ted Seastrom  
Mr. and Mrs. David A.  
Shaffer  
Corey Shields  
Mr. and Mrs. Robert C.  
Shook  
Stanley K. and Pamela G.  
Sichting  
Rita Simon  
Harold Sisson  
Society of St. Vincent de  
Paul of Brown County  
Mr. and Mrs. Tim Sparks  
Richard and Clara Stanley  
State Employees'  
Community Campaign  
State of Indiana  
Bill and Jan Swigert  
Mr. and Mrs. Layton Tackett  
Beverly Teach  
Jeff and Laurie Teal  
Mr. and Mrs. Paulo Teixeira  
The Benevity Community  
Impact Fund  
Dwight Thompson  
Rachel Thompson

John and Kirstie Tiernan  
Kathryn Tillman  
Nathan and Gretchen  
Tipton  
William and Linda Todd  
Carol and Jesse Trueblood  
United Way of  
Bartholomew County, Inc.  
United Way of Central  
Indiana, Inc.  
United Way of Monroe  
County, Inc.  
James Voland Scholarship  
Trust  
Melanie Voland  
Cynthia M. Volkman  
Mr. and Mrs. Larry Voris  
Mr. and Mrs. William C.  
Walters  
Janet and Warren Ward  
Jane E. Weatherford  
Susan Webb  
Erica Weddle  
Linda Welty  
Laura Wenzler  
Jack and Linda Wescott  
White Oak Foundation INC  
Luann Wiedenmann  
Wild Hair and Sun Inc  
Shelley Williams  
Mr. and Mrs. Thomas F.  
Wood  
Mr. and Mrs. Edward  
Wrightsman  
Chuck and Stephanie Yager  
Laura Weinland Young  
Mrs. Barbara Zieg  
Mark B. and Gina M.  
Zimmerer





## Organizations for Nonprofit Excellence

We are bringing area nonprofits together to learn and build collaborative partnerships through the newly introduced “Organizations for Nonprofit Excellence” (ONE).

ONE began with a goal to enrich the skills of local nonprofits through trainings, classes, and networking opportunities.

After surveying area nonprofits in the fall of 2021, BCCF board and committee members began to offer programs and networking opportunities to Brown County nonprofits in 2022.

Visit [browncountygives.org/ONE](http://browncountygives.org/ONE) to learn more.

## Join The Grove, Give Monthly

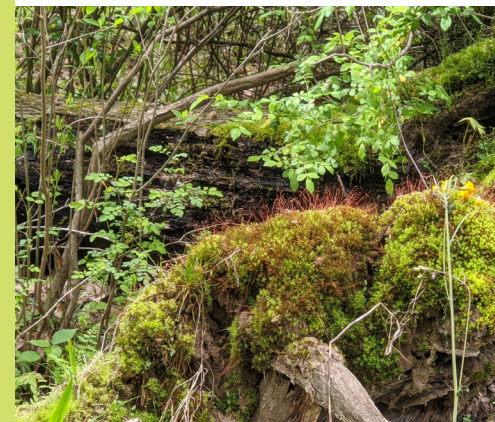
As a supporter of our work, you understand that giving monthly will help our organization do more good, but that your day-to-day life will largely go unchanged. When you join The Grove, you will join a special group of donors who contribute each month toward our extensive work in Brown County. Your donation can be setup as an automatic monthly payment, so you don't have to worry about sending in a donation.

Your Grove is Brown County. Your donation will be planted for the cultivation of future generations. The fruit your Grove bears are scholarships, grants, community initiatives, and so much more. With your monthly contribution, you will be recognized in our annual report as part of the BCCF Grove.

**Text the code JOINTHEGROVE to 44-321 to join.**

### Thank you to our Grove Members:

Ms. Jane Ellis  
Richard M. and Lisa M. Hall  
Philip McKown and Paul Walker  
Jan and Scott Mills  
Nashville Spice Company  
Ms. Rachel B. Perry  
Kerry and Susan Ridge  
Scott and Erika Rudd  
Jeff and Laurie Teal  
John and Kirstie Tiernan  
Erica Weddle



# Tributes and Memorials

## **In Tribute to...**

### **Mary Jane Brown:**

Jennifer Cissell

### **Betsy and Fred Dornhiemer:**

Todd and Leann Paarlberg

### **Sean Hildreth:**

Adam Crowe

Tim and Debbie Kelley

### **Hills O'Brown/Carpenter:**

Robert and Christy Kirlin

### **Kevin McCracken:**

Victor Bongard

Judy Hanson

Jon Bachmeyer

Kyle Birkemeier

Kady Lane

### **Vivian McNulty:**

Brent and Jenise Bohbrink

## **In Memory of...**

### **Charles Ford**

William Dixon

### **Chet Kylander:**

Mrs. Tamra M. Galm

### **Chuck Kirlin:**

Mr. and Mrs. Del Newkirk

Robert and Christy Kirlin

Christopher Curtis

James and Diana Buhl

### **Dave Hennessy:**

Carolyn and David Emmert

Deborah Flesch

Mr. Jean-Patrick Rich

Mr. and Mrs. Del Newkirk

Cindy Nelson

Robert and Christy Kirlin

Mr. and Mrs. Robert Oliger

Rotary Club of Brown County

### **Faye Lynn Deckard:**

Mr. and Mrs. Edward Wrightsman

### **Fred and Mary Jane Lorenz:**

Lorenz Family Charitable Trust

### **Jean Hildreth:**

David and Bonnye Good

### **Jim Crane:**

Mr. and Mrs. Del Newkirk

### **Margaret Eddelman Nelson:**

Rodney and Heida Garrett

and Family

### **Mary Ellen Storrs:**

Mr. and Mrs. Del Newkirk

### **Michael O'Hara:**

Mr. and Mrs. Del Newkirk

### **Mike Lafferty:**

Kimberly Baird

Tim Davis

Carol Schnyder

Laurie and Wayne Justice

Lois Jones Currie

Joe Misiniec

Barbara and Gary Lewis

Mr. and Mrs. Paulo Teixeira

Archie and Mary McDowell

Richard and Karyn Gundrum

Premier Companies

Bill Corcoran and Dan Withered

Linda Ellis

Gamma Phi Beta Bloomington

### **Nell Hamilton:**

Mrs. Tamra M. Galm

### **Robert Wright:**

National Financial Services LLC

### **Sue Borgelt:**

Mr. and Mrs. Del Newkirk

Robert and Christy Kirlin

### **Terry Berryman:**

Luann Wiedenmann

Mrs. Gloria Berryman

### **Vic Martin:**

Mr. and Mrs. Richard D. Kelley



## Pass-Through Funds

are non-endowed which flow directly to a project or organization.

### The August Fund

BETA Kids on Wheels: Skate Board Park

Brown County Access

Brown County Playhouse Invested Fund\*

Brown County Rapid Response Fund

BCCF Pre-K Funding Passthrough Fund

Brown County Humane Society Dr. James Brester Receiving Treatment Room Fund

Brown County Community YMCA Advised Agency

Brown County Schools STEM Education Pass-Through Fund

Brown County Sheriff's Reserve Fund

Brown County Tracks4Vets Fund

Caregiver Services in Honor of B. Diane Cantrell

Charitable Giving through Payroll Deductions Fund

Christian Funeck Memorial Passthrough Fund

Desiree Powell Memorial Fund

Employees of Cummins of Brown County

Experience the Arts in BC

The "Fabulous Fifty Women's Circle of Care"

Friends of Jefferson Street Park Fund

Gipson-Lawlor Brown County Teacher of the Year Fund

Herman B Wells Invested Passthrough\*

The Howard Hughes Legacy Fund for Brown County

Howard Hughes Memorial Morel Mushroom Sale

James A. Voland Memorial Scholarship Fund

Lake Lemon Enhancement Fund

Magnanimous Men AKA Fab Fifty Fan Club Fund

Maple Leaf Performing Arts Center Pass Through Fund

Nashville Public Art Fund

Richard L. and Ruth W. Johnson Fund

Salt Creek Nature Trail Fund

Salt Creek Revitalization Pass-through Fund

Society of St. Vincent de Paul Truck Maintenance Fund

Smithville Summer Play/Brown County Playhouse

Stuff-A-Stocking Event Pass-through Fund

Village Green

We the People

Women's Resource Center

\*new fund in 2021

## Agency Endowment Funds

benefit nonprofit organizations. Distributions from these funds are made directly to the donor agencies to carry out their respective missions. Contact our office for more information.

Brown County 4-H Club Association Fund

Brown County Art Guild Fund

Brown County Big Brothers Big Sisters, Inc. Fund

Brown County Habitat for Humanity Fund

Brown County Historical Society Fund

Brown County Humane Society Fund

Brown County Lions Club Daily F. Hill, Louis B. Macon, Tom Barnhart, and Bob Nixon Memorial Fund

Brown County Lions Club W. Foster

McKenny Memorial Fund

Brown County Literacy Coalition Fund

Brown County Public Library Fund

Brown County Volunteer Fire Department Fund

Christian Funeck Memorial Fund

Developmental Services, Inc. Fund

Friends of the Brown County Public Library Fund

Friends of T.C. Steele State Historic Site Fund

Fruitdale Volunteer Fire Department Fund

Genevra Owens Oak Ridge Cemetery Association Fund

Girl Scouts of Central Indiana Fund

Hamblen Township Volunteer Fire Department Fund

Hoosier Heartland Resource Conservation Broonand Development, Inc. Fund

Indiana Arts Commission - BCCF Administration

Indiana Arts Commission - Regional Arts Partner

Indiana Heritage Arts (IHA) Permanent Art Collection Fund

Jackson Township Fire Department Fund

Maple Leaf Performing Arts Center Endowment

Fund Mother's Cupboard Fund

Mt. Zion Cemetery Association Fund

Psi Iota Xi Eta Alpha Chapter Fund

Rotary Club of Brown County Fund

Taggart and Hamblen/Taylor Cemeteries Association Fund





# Designated Endowment Funds

support a charitable organization or program.



|  |   |  |
|--|---|--|
| Al and Elaine K. Mallory Foundation Fund   | Christole Inc. Children's Memorial Fund                                   | Mardi and Hank Swain Library Director's Discretionary Fund     |
| Bob "Hambone" Hamilton Memorial Fund   | Carolyn Churchman Memorial Fund   | Michael and Jaydene Laros BCCF Operations Fund                 |
| Brown County Art Gallery Foundation and Museum Fund  | Cordry-Sweetwater Branch of the BCPL Fund                                 | Mother's Cupboard Community Kitchen's Founding Directors' Fund |
| Brown County Big Brothers Big Sisters Inc. Fund  | Delano L. and Luzetta A. Newkirk Fund                                     | Mother's Cupboard Project Helping Hands Designated Fund        |
| Brown County Career Resource Center Fund   | Developmental Services, Inc. Fund   | Nashville United Methodist Church Fund                         |
| Brown County Community Church Fund   | Dinner's Ready! Fund for Mother's Cupboard Community Kitchen              | Nashville Public Art Fund                                      |
| Brown County Community Foundation Inc. Admin. Fund   | Dolly Parton's Imagination Library of Brown County Fund                   | National History Day Award, presented by Ken Birkemeier Family |
| Brown County Community YMCA Fund   | Dr. Bill Fund, as a memorial to Dr. William Howard Ed Lewis Memorial Fund | Peaceful Valley Heritage Preservation Fund                     |
| Brown Co. Enrichment for Teens Association, Inc.   | Elizabeth LeBlond McGinley Designated Fund                                | Perelman Fund for Mother's Cupboard Community Kitchen          |
| BETA Group Fund  | Emily and Gaither Eads Designated Fund                                    | Rotary Club of Brown County Fund                               |
| Brown County Girls' Softball Fund  | Employees of Cummins in Brown County                                      | Renée McDermott Indiana University Law School Library Fund     |
| Brown County Habitat for Humanity Fund   | Erma L. Harker Memorial Fund  | St. David's Episcopal Church Outreach Fund                     |
| Brown County Historical Society Fund   | Friends of the Brown County Public Library Fund                           | Sycamore Land Trust Land Stewardship Endowment Fund            |
| Brown County Humane Society Fund   | Gay Moore Memorial Fund   | Truemper Fund for Mother's Cupboard                            |
| Brown County Lions Club Daily F. Hill, Louis B. Macon, Tom Barnhart, and Bob Nixon Memorial Fund | Girl Scouts of Central Indiana Fund                                       | Whitney Freshour Memorial Fund                                 |
| Brown County Lions Club Kurt M. Von Schriltz Memorial Fund                                       | Gipson-Lawlor "Teacher of the Year" Fund                                  | Woodrow and Thelma Newkirk Fund                                |
| Brown County Literacy Fund   | Howard Hughes - SPOT Program  |  |
| Brown County Literacy Coalition Fund   | Howard F. Hughes Fund for Polly's Bark Park                               |  |
| Brown County Public Library Fund   | John V. and Janet S. Davis Fund   |  |
| Brown County Veterans of Foreign Wars Post #6195 Fund  | Joseph L. and Frances C. Fears Fund                                       |  |
| Burton C. and Suzanne H. Borgelt Funds   | Les and Mary Rudd Memorial Fund   |  |
| John Charles and Phyllis Truemper Memorial Fund  | Mabel B. Annis Memorial Art Fund  |  |
|  | Maddie's Fund   |  |
|  | Marcia A. Flaherty Fund   |  |

# Donor Advised Endowment Funds

allow the donor and donor's family to remain personally involved in the process of grantmaking from the fund by annually making recommendations to the Foundation.

**Alice Lorenz Fund** supports Brown County charitable needs.

**Austin Family Fund** supports Brown County charitable needs.

**Bill and Gini Percifield Fund** provides funds to purchase and display the American flag.

**Brown County Board of Realtors Fund** supports the charitable interests of the Brown County Board of Realtors for citizens of Brown County.

**Carter Fund for the Arts, Humanities and Education Fund** supports the arts, humanities and education in Brown County.

**Charles F. and Brenda Wheeler Zody Advised Fund** fulfills the donors' charitable missions in Brown County.

**Clarence W. Long and Mildred L. Long Fund** promotes interest in, and appreciation of early Brown County art.

**Cnoc Mullach Fund\*** supports Brown County charitable needs.

**David W. Yaseen, Phd. Memorial Fund** promotes and enhances community inclusion and awareness for persons of all ages with disabilities to gain access to elements, activities, events, buildings/ facilities, environmental or recreation spaces that are directly associated with arts, culture, parks and recreation.

**Dean and Nancy Ransburg Fund** supports the charitable needs of Brown County.

**Frederick G. and Mary Jane Lorenz Memorial Fund** supports Brown County charitable needs.

**Frederick W. and Jeanette Rigley** provides funding to support the Arts.

**Gnaw Bone Camp Fund** provides support for outdoor education opportunities with respect to the enjoyment of the outdoors as a memorial to Frederick G. Lorenz, Jr.

**Howard F. Hughes Legacy** supports until 2019, according to the advisors wishes, Brown County Playhouse.

**Howard F. Hughes Legacy Endowment Fund** promotes the charitable interests of the donor as the donor deems appropriate to benefit Brown County and its citizens.

**Jack and Patricia Bond Fund** supports the charitable needs of Brown County.

**James A. and Renée McDermott Fund** supports the charitable needs of Brown County, including educational, cultural, civic, and social welfare.

**Jim and Lu Brunnemer Fund** supports charitable interests serving citizens of Brown County as recommended by the Brunnemers.

**Jim Kemp Memorial Fund for the Arts** memorializes Jim Kemp's contributions to the arts.

**Johnson Family Charitable Fund for Brown County** supports charitable projects as directed by the donor.

**Larry and Peg Pejeau Donor Advised Fund** to fulfill the donor's charitable missions in Brown County.

**Michael A. and Jaydene Laros Fund** supports the charitable needs of Brown County.

**Meredith Helmerich Memorial Fund** supports Brown County charitable needs.

**Rick and Cindy Colglazier Fund** supports the charitable interests of the founding donors.

**Rivendell Fund** support as directed by the fund steward.

**Rob and Nancy Coulter Fund** supports the charitable interests of the founding donors.

**Scott and Hazel Olive Fund** supports the charitable needs of Brown County.

**Smithville Charitable Foundation Fund** provides support as directed by the Smithville Board of Directors.

\*new fund in 2021

# Unrestricted Endowment Funds

benefit the general community, entrusting those granting decisions to the Foundation's Board of Trustees through our annual community grants program.

25th Anniversary Endowment Fund

Bear Hardware Fund

Betsy Voss and Fred Dornheim

Brown County Democrat

Brown Co. Health and Living Community

Brown County Rotary Club Leadership

Chris M. Wagner Family

David and Daren Redman

David H. and Catherine A. Martin

Donald Knebel and Jennifer Colt Knebel

Donna Ormiston

"Fabulous Fifty Circle of Care"

Faye Lynn Deckard

For Kids Sake

Genevra (Chig) and James Owens

Harry E. (Punk) and Betty Snider

Jim and Boni Head

John and Kirstie Tiernan Family

John D. and Pamela H. Raider

Julie and Jack Winn Legacy

Legacy Fund for Brown County

Lloyd Legacy Fund

Logterman Family Fund

Margaret Colglazier Discretionary Fund

MIBOR Realtor Assoc. Fund

Nashville Neighbors Fund

Nell Culp Percival Fund

Rebecca Freeman Fund

Samuel R. and Joan Rosen Fund

Shrewsbury Fund

Skaarsgard Discretionary Fund

Stuff-a-Stocking Holiday Event Fund

Tim and Debbie Kelley Fund



# Scholarship Endowment Funds

These support educational endeavors.

**Allen and Sandee Hazelbaker Family Habitat Scholarship Fund** provides support for the children of Habitat homes to further their education and the opportunity that education will provide for them.

**Betty Moebs Scholarship Fund** provides tuition assistance to Brown County residents pursuing a Bachelor of Science degree in Education in order to become a teacher.

**Bill and Judy Zimmerman Scholarship Fund** provides tuition assistance to Brown County residents pursuing a two or four year degree in arts or music on a full or part time basis.

**Bill Monroe Memorial Scholarship Fund** provides scholarships for Brown County High School students, or resident or participant in a Bluegrass music mentoring program, who intend to earn a Baccalaureate Degree in Music or related field of study.

**Bob and Wilma Hale Nursing Scholarship** provides tuition assistance to Brown County residents pursuing a two or four year degree in nursing.

**Brown County 4-H Scholarship Fund** provides tuition assistance to a current 4-H member.

**Brown County Indiana University Scholarship Fund** provides scholarships to graduates of Brown County High School to subsidize their attendance at Indiana University.

**Brown County Lions Club Sam Johnson Memorial Scholarship Fund** provides tuition assistance to Brown Co. residents.

**Bruce Gregory Temple Memorial Scholarship Fund** provides scholarship grants to deliver financial resources to deserving Brown County High School graduates or students who have achieved a GED and have been accepted to a bachelor degree program at an accredited college or university.

**Burke/Tharp Legacy Scholarship Fund** provides tuition assistance to students from Leo High School, Delta High School, Blackford County High School and Brown County High School who are attending Purdue, Ball State or Michigan Universities. Preference to minorities, women and need-based.

**Carolyn N. Pitt Brown County Ivy Tech Community College Scholarship** provides support to the Columbus region of Ivy Tech Community College through the Ivy Tech Foundation for scholarships for Brown County residents attending Ivy Tech classes in Brown County.

**Clarence and Karen Zody Scholarship Fund** provides scholarship grants to residents of Brown County to subsidize their attendance for any type of education, vocational education, college or university education or trade school education.

**Claude L. Graham Family Scholarship Fund** provides scholarships to non-traditional students who are graduates of BCHS or current Brown County residents pursuing any college, vocational or two year trade school.

**Dr. James Brester Scholarship Fund** supports a person whose intent is to become a certified Veterinary Technician (working to pass the Veterinary Technician National Exam) or to become a Doctor of Veterinary Medicine.

**Dorothy Stewart Memorial Scholarship Fund** provides scholarship grants to BCHS graduates exhibiting an exceptional level of citizenship, community involvement and stewardship.

**Faye Lynn Deckard Memorial Scholarship Fund** provides scholarships to students who are residents of Brown County and are pursuing an early childhood education degree

**John A. and Cheryl J. Eyed Scholarship Fund** provides tuition assistance to Brown County residents attending Ivy Tech Community College.

**Larry C. Banks Bronze Star Memorial Scholarship Fund** provides scholarships for vocational education to students from Brown County Public Schools.



**McGrayel-Russo Memorial Scholarship Fund**

provides scholarships for Brown County High School students receiving the Golden Eagle Award.

**Norman Family Scholarship**

provides scholarship to residents of Brown County and whose personal commitments and financial circumstances would preclude their attendance without substantial scholarship support.

**Peaceful Valley Memorial Fund**

provides financial resources to deserving Brown County High School graduates or a student who has achieved a GED pursuing either a four year college academic degree or a multi-year vocational degree.

**Richard A. Bowden Golfers' Scholarship Fund**

provides scholarship grants to Brown County traditional or non-traditional students who have love and passion for the game of golf.

**Richard and Virginia Stoner Athletic Scholarship Fund**

provides scholarships to Brown County children to attend athletic camps, clinics, and similar programs.

**Sam and Harriet Johnson Scholarship Fund**

provides scholarships to graduates of Brown County High School to subsidize their attendance at Purdue University.

**Schmidlapp – Fifth Third Bank Second**

**Chance Scholars Fund** provides financial aid for adult learners participating in educational opportunities offered by the Career Resource Center in Brown County.

**Sean and Julie Milloy Scholarship**

provides tuition assistance to Brown County residents pursuing a two or four year degree at a vocational school.

**Shaffer Family Scholarship\***

Benefits students attending Brown County schools who are the children of employees of Brown County schools and who plan to attend an Indiana school.

**Simon Family Scholarship Fund**

provides scholarships to graduates of Brown County High School.

**Steven and Cathy Junken Scholarship Fund**

provides scholarships to graduates of Brown County High School who qualify for financial assistance.

**Wilma Brown Nursing Scholarship Fund**

provides a scholarship to a nursing student who has, at minimum, completed a Licensed Practical Nursing degree. Student must be enrolled as a student at Ball State University studying for a Bachelor's Degree in nursing.

# Field of Interest Funds

These funds support a broad area of concern identified by the donor.

- Aileen Marshall Graham Fund
- Bartels Family Arts and Cultural Fund
- Betty Alice Crews Endowment Fund
- Blood Alley Women's Fund
- Brown County Environmental Stewardship Fund
- Carol Walker "Thank a Teacher" Fund
- Charlotte Reeves Music Appreciation Memorial
- Chuck and Will Kirlin Fund
- Environmental Leadership Fund, Serving Peaceful Valley
- Helmsburg Fund
- Howard F. Hughes Historic Preservation Fund
- Jackson Family Foundation
- John C. Truemper Memorial Fund
- Make a Difference Fund
- Melungeons for Youth Fund
- Sam and Florence Roney Beautiful Brown County Fund
- Theater Brown County Fund
- William Foster McKenney Memorial Fund  
for Mental Health

\*new fund in 2021

# Mission

The Brown County Community Foundation provides community-wide collaborative leadership through philanthropy, mobilizing people and resources to make a positive impact.

## Our Core Values:

### Diversity:

We seek and embrace the participation and perspectives of people and communities that reflect who we are as a region and we are committed to ensuring all residents have the opportunity to thrive.

### Integrity:

We will uphold the public trust placed in us to ensure that we exhibit the highest ethical standards, honor our commitments, remain objective and transparent, and respect all our stakeholders.

### Stewardship:

We govern the organization with a “Duty of Care” and “Duty of Loyalty” to preserve, protect, and grow our resources while safeguarding donor intent in perpetuity.

### Leadership:

We will lead by example, listening to the voices in our community to convene, connect, and catalyze positive change to build a better tomorrow

**Creativity:** We believe the power of imagination is greater than the challenges we face and support programs that represent creative solutions to society's problems.

### Excellence:

We will enhance and reward nonprofit best practices and fund projects which represent innovation and increase efficiencies within sustainable organizations.



Brown County Community Foundation

P.O. Box 191

Nashville, IN 47448

812-988-4882

[browncountygives.org](http://browncountygives.org)

Thank you to our Annual Report Sponsor!



**MASON**  
INVESTMENT ADVISORY  
SERVICES, INC.